

远洋资本 2021年ESG负责任投资简报

2021 SINO-OCEAN CAPITAL ESG INVESTMENT BRIEFING



远洋资本有限公司

Sino-Ocean Capital

地址：北京市朝阳区东四环中路56号远洋国际中心A座3层

Add : 3F, Tower A, Sino-Ocean International Center, 56 East 4th Ring Middle Road, Chaoyang District, Beijing

电话 / Tel : +86(10)65107979

传真 / Fax : +86(10)65107931

媒体关系 / Media Relations: capitalmedia@sinooceangroup.com

投资者关系 / Investor Relations: IRMS@sinooceancapital.com





目录 CONTENTS

1.

什么是 ESG 负责任投资

What is ESG Investment?

3.

ESG 负责任投资在远洋资本

Implementing ESG investment in Sino-Ocean Capital

23.

远洋资本 ESG 负责任投资体系搭建建议

Proposals on the Establishment of the ESG investment Framework in Sino-Ocean Capital

27.

远洋资本 ESG 负责任投资案例

ESG investment Cases in Sino-Ocean Capital

37.

意见反馈表

Feedback



WHAT IS ESG 负责任投资

What is ESG Investment

负责任投资原则（PRI）与 ESG / PRI and ESG

负责任投资原则（PRI）是对当下投资行为的重新定义，在联合国支持的负责任投资原则组织的大力推动下，该理念正逐步获得全球资产所有者、投资机构、监管机构及其他行业参与者的广泛认可，为资本市场的长期、可持续发展带来了深远的影响。

The Principles for Responsible Investment (PRI) redefines the existing investment behaviors. It is now gaining increasingly recognition among global investors, investment institutions, regulators, and other stakeholders fostered by the UN-supported PRI, thus exerting far-reaching impacts on the long-term, sustainable development of capital markets.

负责任投资原则组织是全球负责任投资的主要倡导方，旨在帮助全球投资者理解环境、社会和公司治理议题（ESG）对投资的影响，并支持签约机构将 ESG 议题融入投资决策的环节中。

The PRI is the world's leading proponent of responsible investment. It works to help global investors understand the investment implications of environmental, social and governance (ESG) factors, and to support its international network of investor signatories in incorporating these factors into their investment and ownership decisions.

ESG 负责任投资 / ESG Investment

环境、社会和公司治理（ESG）是具有责任意识的投资者用来筛选投资标的和进行投资决策的标准。其中，环境因子考察的是企业环境使用和保护绩效；社会因子研究的是公司如何管理员工及其运营所在社区的关系等问题；公司治理则涉及高管、董事会及其股东、贪污受贿处理等。

Environmental, social and governance (ESG) criteria are a set of standards for socially conscious investors to screen potential investments and make investment decisions. Environmental criteria are intended to inspect a company's performance in environmental activity and protection. Social criteria examine how it manages relations with employees and the communities wherein it operates, and other issues. Governance deals with issues related to a company's senior management, board and directors, bribery and corruption response, etc.

ESG 负责任投资是指在选择投资标的和进行投资决策时，将环境、社会和公司治理三个因素纳入其中，帮助投资者更好地实现风险管理，创造长期可持续收益回报。

ESG investment is a practice where investors incorporate ESG factors into selecting potential investment targets and making investment decisions, so as to better manage investment risks and attain sustainable yields in the long term.

ESG 负责任投资 在远洋资本

Implementing ESG investment in Sino-Ocean Capital

在远洋资本，我们始终高度重视 ESG 负责任投资。自从 2013 年成立以来，在公司董事会的引领下，在管理团队的精心组织下，各业务团队和职能模块密切配合，远洋资本严格遵循监管部门的相关监管要求，秉承 ESG 负责任投资理念，将环境、社会、公司治理因素纳入公司治理及业务发展过程中。

In Sino-Ocean Capital, we always attach high importance to ESG investment. Since established in 2013, we, under the leadership of our Board of Directors (the Board) and the meticulous organization of our management team, have strictly complied with the relevant requirements of the regulators, and incorporated environmental, social and governance (ESG) factors into our internal governance and business development adhering to the concept of ESG investment.

在远洋资本，我们把 ESG 负责任投资分为五大维度：对投资者负责、对被投资企业负责、对政府负责、对员工负责、对社会负责。

In Sino-Ocean Capital, ESG investing is practiced in these five principle: **being responsible for investors, invested companies, governments, employees, and society.**

远洋资本始终秉承“审慎、尽责、协同、赋能”的另类资产管理理念，凭借专业独到的投资眼光和价值挖掘能力，通过“募、投、管、退”全周期的资产管理业务模式和产业协同，投资了一系列环保企业以及为社会做出重大贡献的企业实体，帮助合作伙伴实现价值提升，实现对受托资金的有效管理与价值的共创共赢，最终为股东和社会回报价值，更好地履行自身社会责任。

In Sino-Ocean Capital, prudence, diligence, synergy and empowerment are emphasized in our alternative asset management. We leverage our deep understanding of the industry to refine our investment views and achieve price discovery for undervalued assets. With our market-tested full cycle capacity of fundraising, investment, management, and exit, we have invested in a large array of environmental protection enterprises and other corporate entities contributing greatly to society. We strive to enhance the value of partners and pursue a win-win situation by relentlessly enhancing asset appreciation and capital efficiency, with the ultimate goal of creating shared value for both our shareholders and society. By so doing, we better fulfill our corporate social responsibilities (CSR).

02
对被投资企业负责
Responsible for invested companies

04
对员工负责
Responsible for employees



对投资者负责
Responsible for investors

对政府负责
Responsible for governments

对社会负责
Responsible for society

01

03

05

在远洋资本，我们按照中国证券投资基金业协会相关条例指导，充分落实投资者适当性原则；建立起严格的信息保护机制，确保投资者的信息保密和保护；推进项目全流程风险控制建设，依托 ESG 负责任投资理念进行筛选，鉴别优质公司及项目，降低投资组合的风险，实现投资者利益保障。

In Sino-Ocean Capital, we fully implement the principle of investor appropriateness in accordance with relevant regulations of the Asset Management Association of China (AMAC); put in place an information protection mechanism to strictly keep investors' information safe; exercise the full-process risk control over all projects; and rely on the ESG investment criteria to screen and identify quality companies and projects, preemptively reduce risks of investment portfolios and safeguard investors' interests.

1) 投资者适当性 / Investor Appropriateness

在远洋资本，我们按照中国证券投资基金业协会相关条例指导，充分落实投资者适当性原则，严格按照投资者不同的财产收入情况、风险承受能力、投资需求、产品需求和服务需求等情况提供匹配的金融产品或者服务。自然人投资者提供个人资产证明，机构投资者提供财务报表，填写《基金投资者风险测评问卷》。

In Sino-Ocean Capital, we fully implement the principle of investor appropriateness in accordance with the relevant regulations of AMAC. We adopt strict KYC process and offer investors with the most suitable products or services based on their individual risk profiles and investment objectives. Individual investors are requested to provide their personal asset certificates, and institutional investors need to present their financial statements, and fill in the *Risk Profiling Questionnaire for Fund Investors*.



2) 投资者信息保护与关系管理 / Investor Information Protection and Investor Relations Management

远洋资本投资者信息保护制度及措施：通过与投资者签署保密协议、落实投资者身份信息保存制度、给涉及公司客户信息的网络进行加密、为投资者信息查阅设定不同权限、签署员工保密协议等措施来确保投资者信息保密和保护。

Investor information protection policies and measures: Sino-Ocean Capital adopts a host of measures to ensure the confidentiality and protection of investor information, which include but not limited to, signing non-disclosure agreements (NDAs) with investors and employees, implementing investor identity information preservation policies, encrypting the network which handles corporate customer information, and setting tiered permissions for investor information inquiry.

远洋资本投资者关系管理：定期或者不定期召开投资者大会，并按照季度及年度向投资人提交相关报告。季度报告：自首次交割日后的第一个完整季度起，于季度结束后 20 个工作日内提交该季度未经审计的财务报表，内容包括该季度的相关投资、退出、分配以及基金业协会规定应当披露的其他信息。年度报告：自首次交割日后的第一个完整年度结束后，于每年 4 月 30 日前向投资人提交年度报告，内容为上一年度投资活动总结及上一年度经过审计的年度财务报表，以及按照基金业协会规定应当披露的其他信息。同时，通过线上和线下的信息披露与投资人保持持续沟通。

Investor relations (IR) management: We hold investor meetings on a regular or irregular basis, and submit relevant reports to investors on a quarterly and annual basis. Quarterly report: From the first full quarter after the first delivery date, the unaudited quarterly financial statements will be submitted within 20 working days after the end of the quarter, which cover such aspects of content as investments, exits and distributions that take place in the quarter, as well as other information items to be disclosed as per the provisions of AMAC. Annual report: After the first full year since the first delivery date, an annual report shall be submitted to investors before April 30 of each year. The content of annual reports encompasses a summary of investment activities conducted in the previous year, the audited annual financial statements of the previous year, as well as other information that should be disclosed as required by AMAC. At the same time, we also maintain continuous communication with investors through information disclosure, both online and offline.

3) 投资者利益保障 / Protection of Investors’ Interests

远洋资本项目投资的全流程风险控制：在项目投资前，依据详尽的商业、财务和法律尽职调查报告进行决策，避免不适当的投资项目给投资者带来较大的投资损失风险；筛选优质项目之后，投资管理团队运用专业财务分析和投资模型，结合实践经验和其他客观因素制定投资价格、交易结构及保护机制等条款；在投资决策时，通过严密的投资审批程序以确保团队做出审慎的决策，防范和降低不必要的投资策略风险、财务损失风险、法律风险和声誉风险；在投资中，确保事中控制，针对项目特点设计好退出方案，在项目交易结构上强化保护条款，不断地完善交易结构设计；在投资后，投后管理团队会对被投资企业的经营状况、盈利能力、财务资料及行业市场的情况进行后续跟踪分析，对被投资公司的关键绩效指标进行监测、定期与被投资公司的管理层会面讨论等。

Full-process risk control over project investment: Prior to investing in projects, Sino-Ocean Capital bases our decision-making on detailed commercial, financial and legal due diligence reports, in a bid to avoid improper project investments which may put investors at great risk of sustaining losses. With high-quality projects sifted out, the investment management team formulates terms such as investment price, transaction structure and protection mechanism, by using professional financial analysis and investment models, along with our practical experience and other objective factors. When it comes to investment decision-making, rigid investment approval procedures are adopted to ensure that the team can make prudent decisions, with a view to forestalling and reducing unnecessary investment strategy risk, financial loss risk, legal risk, and reputational risk. While investments are underway, in-process controls will be introduced. Exit plans are devised in light of project characteristics, and enhanced protection clauses are added to the existing project transaction structure, in a move to get the transaction structure improved continuously. After an investment is made, the post-investment management team will make the follow-up analysis of the invested company in terms of operating status, profitability, financial information, and industry or market landscape, in addition to monitoring its key performance indicators (KPI) and holding periodic discussions with its management face to face.

4) ESG 负责任投资理念下的项目筛选 / Project Screening under the Concept of ESG investment

远洋资本在筛选投资项目过程中会使用 ESG 指标或者相关的主题，尝试衡量投资组合对环境和社会的影响，鉴别优质公司及项目，降低投资组合的风险。如一个项目经济绩效一般但是社会绩效很高，远洋资本投资团队会结合实际情况作出决策。社会绩效给企业带来的价值无法用投资回报的数字衡量，但这是公司的“无形资产”，高社会绩效也是企业价值体现的一部分。

When screening the potential investment targets, we use ESG indicators or related factors in an attempt to measure the impacts of an investment portfolio on environment and society, identify high-quality companies and projects, and reduce the risks possibly facing the investment portfolio. For investments with moderate economic returns but profound social benefits, decisions will be made in a balanced manner with ESG considerations being a key factor. For a company, social performance brings it with the value which cannot be measured by such figures as return on investment, but it is indeed an intangible asset of the company. In this sense, high social performance proves to be a strong embodiment of corporate value.

在筛选股权投资的项目时，除了合规性、收益性、安全性和成长性等基本市场考虑外，还会考虑企业社会责任因素，例如当涉及到“大环保”领域时，会重点考虑企业对环境保护与治理的突出贡献以及绿色新技术、新科技的应用与实践；当投资“大物流”领域时，会重点关注供应链管理对环境及社会效率提升的作用。此外，企业的社会责任、员工责任、股东责任等方面也会人关注并影响投资决策。

When selecting private equity (PE) projects, we also take into account corporate social responsibility (CSR) factors, along with basic market considerations such as compliance, profitability, security, and growth. For instance, when it comes to the field of environmental protection, we measure an invested target, by giving priority to its outstanding contributions to environmental protection and governance, and its application of green technologies and new technologies in practice. To invest in the field of logistics, our major consideration will be given to the role of supply chain management in improving environmental and social efficiency. Besides, social responsibilities, employee responsibilities, shareholder responsibilities, and other aspects of a company will also draw particular attention in our investment decision making process.



2 对被投资企业负责
Responsible for Invested Companies

远洋资本通过建设生态化、模块化、品牌化和流程化的赋能平台，在保障对被投资企业提供专业精准的支持服务前提下，实现响应及时、运作灵活、经验有效积累和资源持续储备的目标，为被投资企业提供更广阔的增值空间，从而使他们的经营业绩得到提升、内部管理持续优化、品牌宣传更加有效，真正与被投资企业共同打造多元协作、多维协同、跨界创新的产业格局。

Sino-Ocean Capital built an ecological, modularized and branded platform entailing a fixed set of processes, in order to provide specialized and targeted support for private equity investment companies while responding to customer needs in a well-timed and flexible manner, accumulating useful experience and keeping preserving resources. We enhance the value-added potentials for the invested companies. So that their business performance can be improved, internal management be optimized, and brand publicity can be more efficient. In this way, we can work with the invested companies together to develop an industry pattern of diversified collaboration, multi-dimensional collaboration, and cross-sectoral innovation.

1) 赋能管理 / Empowerment Management

远洋资本不断提升整合能力，结合 ESG 指标对投资项目进行精细化管理，通过内外部协同，协助被投资企业对接流量、产品、政策等资源，积极创造价值增量，实现共创共赢。

Sino-Ocean Capital endeavors relentlessly to achieve greater synergies, and brings investment projects under refined management with the help of ESG indicators. Through internal and external collaboration, we assist the funded entities in obtaining such resources as data traffic, products, and policies, and actively create more value to achieve a win-win situation.



郑明现代物流车队 / ZM Logistics fleet

大健康赛道 / Healthcare

远洋资本与国内医疗美容行业领军型企业——联合丽格达成战略投资协议后，充分结合医疗连锁机构全国布局的需求，继续设立相关医疗专项基金，并依托远洋集团的地产运营优势，积极满足被投资方建院扩张等方面的诉求。

Sino-Ocean Capital reached a strategic investment agreement with BeauCare Clinics, a leading medical beauty company in China. After that, clearly aware of the medical chain's needs for national business presence, we continued to set up special medical care funds and worked hard to meet the investee's demand for hospital facility expansion relying on Sino-Ocean Group's advantages in real estate operations.

大物流赛道 / Logistics

远洋资本投资第三方仓配龙头企业——发网物流。发挥我方资本运作专长，结合资本化实操经验及人脉网络，协助企业全方位论证上市方案、交易所直通渠道对接、上市地点选择、专业机构引荐及协助遴选；向企业引荐专业机构助力企业股权融资推介及路演，协助寻求潜在投资人，为 IPO 顺利推进提供保障。

Sino-Ocean Capital invested in FineEx, a leading third-party storage and delivery company. By taking advantage of our expertise in capital operation, experience in capitalization and extensive networking, we helped FineEx fully test listing plans, connect to straight-through channels of exchanges, and choose a listing location. In addition, we recommended to FineEx and offered support in choosing specialized institutions to conduct equity financing promotion and roadshow for it and assisted it in seeking investors, contributing to its smooth IPO.

大环保赛道 / Environmental Protection

远洋资本战略投资再生资源回收再利用行业系统方案提供商——盈创回收，成为其控股股东。远洋资本通过资金和资源投入，加速其再生工厂的建设和投产，并加大对其与远洋社区物业的整合力度，推动构建循环经济闭环（包括废塑料集中回收、废塑料预处理等），致力打造“健康城市家园”。

Sino-Ocean Capital made strategic investment in Incom Recycle, a systematic solution provider in the renewable resource recycling industry, made us the controlling shareholder of the latter. With the capital and resource input from us, Incom Recycle accelerated the construction and operation of its recycling plants. Meanwhile, it became closely integrated with the Sino-Ocean community properties, a move that contributed to the formation of a closed-loop circular economy (including centralized recycling of waste plastics, and pretreatment of waste plastics). Sino-Ocean Capital and Incom Recycle are committed to creating an eco-friendly urban environment together.

除此之外，远洋资本还协助杏林护理、锐视康、联合利丰等多个项目进行重组、融资、专项基金方案设计与募集等工作。

In addition, Sino-Ocean Capital also assisted many of its invested companies such as Xinling Nursing Home, AMIC, Unifortune in many aspects of work including reorganization, financing, and special fund planning and raising.

2) 运营管理 / Operation Management

远洋资本适度参与被投企业管理，协助企业进行战略规划，规范内控体系，参与考核及激励方案的制定，提升企业精细化运营能力，共同探寻新的业务增长点。

Sino-Ocean Capital participates in the management of invested companies appropriately, by assisting them in strategic planning, standardizing their internal control systems, and getting involved in their formulation of employee appraisal and incentive schemes. While enabling the invested companies to operate more meticulously, we work with them together to explore new engines for business growth.



美中宜和妇儿医院院区 / Amcare Women's and Children's Specialized Health Hospital

大健康赛道 / Healthcare

远洋资本战略投资全国知名高端医疗服务领先品牌美中宜和，入股之初即发挥产业优势，牵线远洋建设承建美中宜和旗下北京清源儿童医院项目，该项目为北京市重点工程，总建筑面积超过 5 万平米。此外，远洋资本积极为其提供资本市场运作及规划建议，引荐上市中介机构，组织参加走进深交所专场活动，创造与深交所发审员一对一交流机会。

Sino-Ocean Capital made strategic investment in Amcare Women & Children's Hospital (Amcare), a renowned and high-end medical services provider in China. Since our investment in the leading medical care brand, we fully exploited our industry advantages, by coordinating with Sino-Ocean Construction to build Beijing Qingyuan Children's Hospital, affiliated to Amcare, which was rated as a key project of Beijing Municipality with a total floor area of more than 50,000m². In addition, Sino-Ocean Capital actively advised the medical group on capital market operation and planning, recommended listing intermediaries to it, and arranged it to participate in a special activity of Shenzhen Stock Exchange (SZSE) where its staff got the chance to have one-on-one communication with exchange issuance reviewers.

大物流赛道 / Logistics

远洋资本投资干线整车货运头部企业卡力互联，根据企业税筹目的提供相应的资讯，为企业或实控人的税筹方案提供备选的参考信息；对于企业的外延式扩张，配合交易框架和主计划，从管理及运营角度给出整合方案的制定和执行建议。

Sino-Ocean Capital invested in KALIHL (Shanghai) Co., Ltd., a leading freight transportation enterprise. We provided relevant information to meet its tax planning goals and reference information for the tax plans of KALIHL or its de facto controller. We also offered managerial and operational recommendations to HALIHL on the development and implementation of the integrated program, accompanied by the transaction framework and the master plan, in a bid to realize the investment expansion of HALIHL.

新地产赛道 / Real Estate

投资规矩建设后，远洋资本通过提供债性资金、派驻董事等多种形式，协助公司制定发展战略，支持公司业务扩展，并在远洋资本投资的物流地产建设项目中与规矩建设进行频繁的深入合作。

Sino-Ocean Capital invested in KALIHL (Shanghai) Co., Ltd., a leading freight transportation enterprise. We provided relevant information to meet its tax planning goals and reference information for the tax plans of KALIHL or its de facto controller. We also offered managerial and operational recommendations to HALIHL on the development and implementation of the integrated program, accompanied by the transaction framework and the master plan, in a bid to realize the investment expansion of HALIHL.

大环保赛道 / Environmental Protection

远洋资本布局危废处理龙头企业瀚洋天辰。协助企业对三会治理程序进行规范，建设完善内控体系，建立基础的财务及法务管控体系，助力企业重组和上市。

Sino-Ocean Capital invested in Han Yang Tian Chen, a leading company in hazardous waste disposal. We assisted the company in standardizing the governance procedure of its Board of Directors, Board of Supervisors and Shareholders' Meeting, building an integrated internal control system, forging basic finance and legal affairs management and control systems, restructuring and going listing.

3) 人才支持 / Talent Support

远洋资本结合被投企业特性，或通过外部招募培养后输出或从内部调配，向被投资企业派驻经验丰富的相关专业人员，助力业务效能提升。目前已累计向控股公司与受资实体派驻财务、法务以及其他管理人员超过 20 人。

Based on the different characteristics of the invested companies, Sino-Ocean Capital sends some well-trained employees from either new hires or our talent pools. To the invested companies/projects. These professionals are expected to help the recipients enhance their business efficiency. So far, over 20 financial, legal and other management personnel have been assigned to work at the holding companies and the invested enterprises.

对政府负责
Responsible for Governments

远洋资本不断完善以公司治理及内部控制为依托，以业务风险管理为核心，以风险合规管理为主体的全面风险管理体系；发挥基金管理团队的基金管理和产业聚集优势，助力地方政府布局产业更新运营；主动履行纳税责任，按照国家相关规定在当地履行纳税义务，并积极为社会创造就业岗位，在满足自身机构发展的同时，为缓解国家就业压力做出贡献。

Sino-Ocean Capital continues to improve a comprehensive risk management system which we built on corporate governance and internal control, with business risk management at the core and risk compliance management as the mainstay. Relying on the fund management and industry gathering strength of the fund management team, we are dedicated to helping local governments plan industry upgrades and operations. In addition to actively fulfilling tax payment obligations as prescribed by local governments, we work hard to create more jobs for society. When attaining our institutional expansion, Sino-Ocean Capital also does our part to alleviate the employment pressure facing China.

1) 内控合规 / Internal Control and Compliance

远洋资本不断完善以公司治理及内部控制为依托，以业务风险管理为核心，以风险合规管理为主体的全面风险管理体系。公司全面风险管理体系由三道防线组成。

Sino-Ocean Capital continues to improve a comprehensive risk management system which is built on corporate governance and internal control, with business risk management at the core and risk compliance management as the mainstay. The comprehensive risk management system consists of three lines of defense.

<p>第一道防线 The First Line of Defense</p>	<p>各业务中心 / Business centers</p> <p>各业务中心承担并管理本单位风险，对自身经营过程中的风险进行识别、评估、应对。 Each business center manages their respective risks, by identifying, evaluating and dealing with the risks that arise from their business processes.</p>
<p>第二道防线 The Second Line of Defense</p>	<p>风险合规部、投后运营中心、财务管理部 Risk and Compliance Department, Post-investment Operation Center, Financial Management Department</p> <p>主要负责全面风险管理体系的建设，包括全面风险管理组织架构、风险管理制度与标准、全面风险数据库的搭建、全面风险评估的流程标准，并对第一道防线的风险管理工作、内部控制开展情况进行实时监控。 The second line of defense is primarily responsible for the development of a comprehensive risk management system, which involves the comprehensive risk management organizational framework, risk management policies and standards, comprehensive risk database building, and comprehensive risk assessment processes and standards. Meanwhile, it also monitors the risk management and internal control practices that take place under the first line of defense in real time.</p>
<p>第三道防线 The Third Line of Defense</p>	<p>审计职能 / Audit Function</p> <p>主要负责公司经营活动与风险管理等方面的合规性与有效性，协助董事会对公司流程潜在的风险进行管理。对第一及第二道防线部门的工作进行稽核、审计和监察，对企业内部控制制度健全性、业务流程的合规性、合理性和风险可控性进行审计，提升公司合规管理，全面降低公司战略、市场、运营等多方面风险。 The third line of defense is mainly responsible for the compliance and effectiveness of business activities and risk management practices, and assists the Board in managing potential risks arising from various processes. It inspects, audits and supervises the work done by the departments along the first and second lines of defense, audits the completeness of internal control policies, as well as the compliance, reasonableness, and risk controllability of various business processes, with a view to raising the compliance management standards and reducing the strategic, market, operational, and other risks across the board.</p>

远洋资本的全面风险管理体系 / The Comprehensive Risk Management System of Sino-Ocean Capital

在内部控制管理方面，公司制定了基金内控合规相关制度，包括《内部控制制度》、《信息披露制度》、《利益冲突管理制度》等，形成职能清晰、独立运作、有效制衡的内部控制管理机制。

With respect to internal control management, we have formulated a complete set of internal control and compliance policies, which include the *Internal Control Policy*, the *Information Disclosure Policy*, and the *Conflict of Interest Management Policy*. These constitute an internal control management mechanism which is designed with clear functions, operates independently, and ensures well balanced internal control.

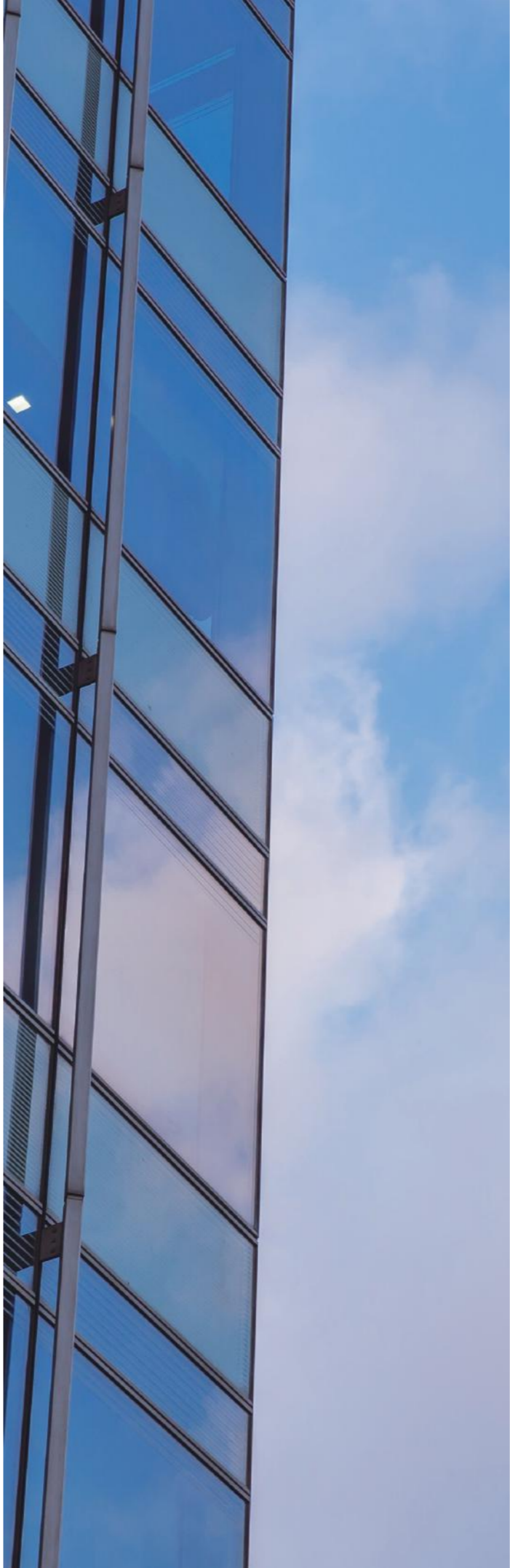
在投资风险管理方面，公司主要从项目投资标准、尽职调查要求、投资决策机制、投后风险识别及处置、退出流程等方面，防范和控制投资风险，具体内容包括：

The primary goal of investment risk management is to prevent and control investment risks arising from project investment standards, due diligence requirements, investment decision-making mechanism, post-investment risk identification and disposal, and exit procedures. Detailed discussions are as follows:

<div>项目投资标准</div> <div>Project Investment Standards</div>	<div>公司按照不同业务类型，分别制定投资指引，设定投资的核心指标及量化标准，业务团队拟投项目须符合制度清单所规定的投资原则。</div> <div>We formulate separate investment guidelines for different business types, and set core indicators and quantitative standards to measure investment. Qualified investments must meet the principles specified in the checklist of relevant policies.</div>
<div>商业尽职调查</div> <div>Commercial Due Diligence</div>	<div>公司针对房地产销售型业务、持有型物业、物流地产、数据地产、PE 股权投资等不同业务类型，分别制定并实施商业尽职调查指引，以提高尽职调查工作的准确性、有效性和全面性，防范和控制业务风险。</div> <div>We formulate and implement commercial due diligence policies for different business types such as real estate sales, developer-owned properties, logistics real estate, Internet data centers, and PE investment, to improve the accuracy, effectiveness and comprehensiveness of due diligence work, and guard against various business risks.</div>
<div>投资决策机制</div> <div>Investment Decision-making Mechanism</div>	<div>公司建立了自上而下、次序分明的投资决策体系，制定《投资决策管理制度》，建立了包括立项审查委员会、投资评审委员会、投资决策委员会的投资决策机制，建立了专家委员参会表决制度，提高投资决策的专业性和科学性。</div> <div>We have established a top-down, well-sequenced investment decision-making system, formulated the <i>Investment Decision Management Policy</i>, put in place an investment decision-making mechanism which includes the project proposal review committee, the investment appraisal committee, and the investment decision-making committee, and stipulated how the members of expert panel shall vote. All of these measures are aimed to make investment decision-making a more professional, rational process.</div>
<div>项目投资实施</div> <div>Project Investment Implementation</div>	<div>公司制定了《合同管理办法》、《投资业务放款管理办法》等，对项目协议及放款审核工作进行规范，防范法律风险及业务操作风险。</div> <div>We have formulated the <i>Contract Management Measures</i> and the <i>Administrative Measures for Loan Disbursement under Investment Business</i>, and other such documents, to regulate project agreements and loan review procedures, which provides an institutional guarantee for preventing legal risks and operational risks.</div>
<div>投后风险识别及处置</div> <div>Post-investment Risk Identification and Resolution</div>	<div>公司制定了《房地产投资业务投后风险监控办法》、《股权投资业务投后风险监控办法》、《风险项目处置工作指引》、《法律纠纷管理办法》等，对投后风险指标进行了量化，以快速识别及评估投后风险，并进行相应的预警和处置。</div> <div>We have drafted the <i>Post-investment Risk Monitoring Measures for Real Estate Investment Business</i>, the <i>Post-investment Risk Monitoring Measures for Private Equity Business</i>, the <i>Guidelines on the Disposal of Risk Projects</i>, and the <i>Legal Disputes Management Measures</i>, among others, which altogether quantify the post-investment risk indicators, thus making it possible to quickly identify and evaluate post-investment risks, and carry out forewarning and disposal measures accordingly.</div>
<div>项目退出机制</div> <div>Project Exit Mechanism</div>	<div>公司针对项目退出决策、退出流程进行规范，防范操作风险。</div> <div>We regulate the project exit decision-making process and actual exit procedures, with an aim to mitigate operational risks.</div>

公司严守合规底线，在基金管理方面严格执行中国证券监督管理委员会及中国证券投资基金业协会的相关规定，按照相关规定对远洋资本现有的三个基金管理人进行合规管理；根据私募投资基金合格投资者标准对基金管理人募集资金的对象进行合规审核；按照私募投资基金信息披露的相关规则定期在基金业协会的系统中进行信息披露及事项申报等；制作、更新和完善合规相关的文件模板；根据业务需要开展合规相关的知识培训；接受监管机构对私募投资基金开展的各类监督检查。

Sino-Ocean Capital strictly sticks to the compliance requirements. As to fund management, we stringently implement the applicable regulations set out by China Securities Regulatory Commission (CSRC) and AMAC. To be specific, we conduct compliance management on our existing three fund managers in accordance with the relevant regulations; carry out compliance review on the investors from which fund managers raise money according to the qualified investor standards for private equity funds; disclose information and declare matters in the AMAC system as per the applicable rules on private equity funds; produce, update and improve the compliance-related document templates; organize compliance training sessions according to business needs; and accept various types of supervisory inspections that regulators carry out on private equity funds.



2) 助力地方产业导入与升级

Contribution to the Incubation and Upgrade of Local Industries

远洋资本积极发挥基金专业管理和产业资源整合优势，与地方政府及其引导基金管理平台合作，发起设立股权投资基金，积极助力地方政府产业导入与升级。

Sino-Ocean Capital actively leverages its advantages in professional fund management and industry resource and teams up with local governments to initiate or establish private equity funds, which are intended to help these governments make progress toward industry introduction and upgrade.

远洋资本与成都市温江区政府在大健康产业领域开展多项合作。2019 年，成都市温江区政府引导基金投资远洋资本医疗健康股权投资基金，远洋资本将多个投资组合及上下游产业项目引入温江区，为当地的产业发展做出贡献。2020 年，远洋资本作为基金管理人，与远洋集团、温江区政府共同发起设立成都交子远洋医药健康股权投资母基金，有效放大地方政府财政杠杆，撬动社会资本重点投资产业功能区的重大产业项目、战略性新兴产业及创新创业企业，以市场化手段引导国内外优秀基金管理人及其优势产业资源落户成都，助力成都市温江区实现成为“医学、医药、医疗、养生、养老”产业高地的战略目标。

Sino-Ocean Capital has carried out a number of cooperation programs with Wenjiang District Government of Chengdu in the field of health care. In 2019, the district government contributed its funds to invest in Sino-Ocean Capital's healthcare PE funds, and we brought multiple investment portfolios and upstream/downstream industry projects to the district in hopes of boosting the development of local industries. In 2020, Sino-Ocean Capital, along with Sino-Ocean Group and the Wenjiang District Government, initiated and established the Chengdu Jiaozi & Sino-Ocean Healthcare Equity Investment Parent Fund as the fund manager. With the fund, the local government could effectively amplify the leverage of local finance, so that more social capital would be diverted to invest in major industry projects on key industrial/functional areas, strategic emerging industries, and innovative and start-up enterprises. Thanks to this market-oriented approach, outstanding fund managers at home and abroad will come and settle in Chengdu along with their advantageous industry resources, thus helping Wenjiang District to achieve its target of becoming an industrial highland of such as medicine, pharmaceuticals, medical service, health preservation, and senior care.

3) 依法纳税促进就业

Tax Payment according to Law and Employment Promotion

远洋资本主动履行纳税责任，按照国家相关规定在当地履行纳税义务，并积极为社会创造就业岗位，在满足自身机构发展的同时，为缓解国家就业压力做出了积极贡献。

In addition to actively fulfilling tax obligations as prescribed by local governments, Sino-Ocean Capital works hard to create more jobs for society. When attaining our institutional expansion, we also do our part to alleviate the employment pressure facing China.

2021 年远洋资本为社会创造新增就业岗位 60 个，其中北京 46 个，上海 6 个，香港 8 个。

In 2021, Sino-Ocean Capital provides 60 new jobs, of which 46 are in Beijing, 6 in Shanghai, and 8 in Hong Kong.

04 对员工负责 Responsible for Employees

远洋资本始终秉承公司与员工是共同成长的关系，帮助员工持续成长，全方位关爱员工，激发员工活力，创造更大价值，从而实现公司和个体的双赢。

Sino-Ocean Capital always seeks to grow together with its employees. We encourage employees to make progress constantly, show all-around care for them, and inspire their creativity to create greater value, thus achieving a win-win situation for both of us.

1) 平等雇佣 / Employment Equity

远洋资本在招聘、解聘等方面的雇佣制度，均按照国家相关法律法规要求执行。在招聘环节中不以性别、年龄等因素对候选人进行差别化对待。在入职体检过程中严格遵守国家劳动法规定，不添加违检项目。截至 2021 年 11 月 26 日，公司共计 336 人。

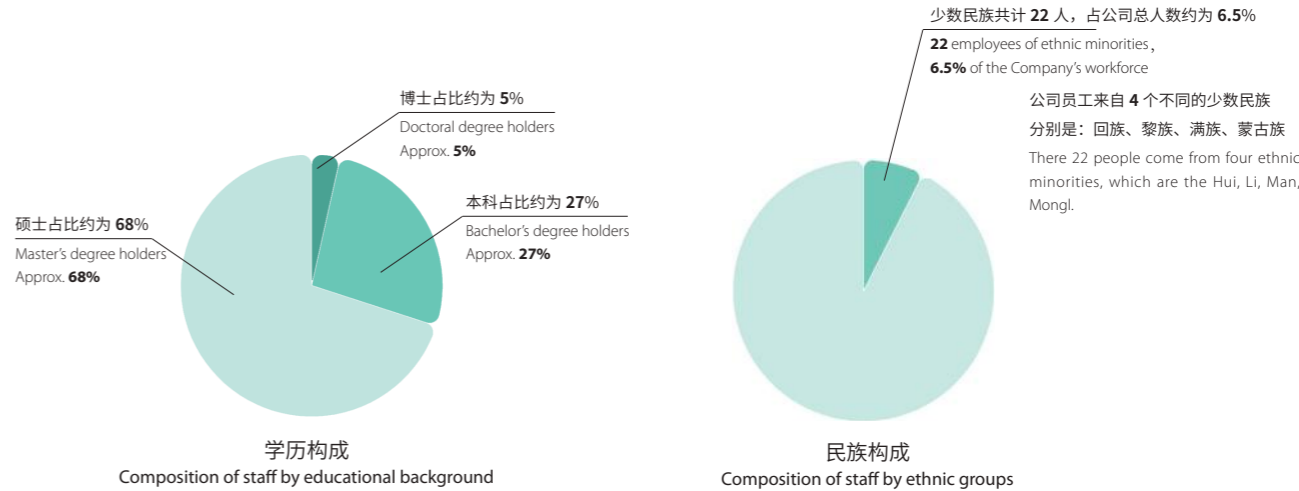
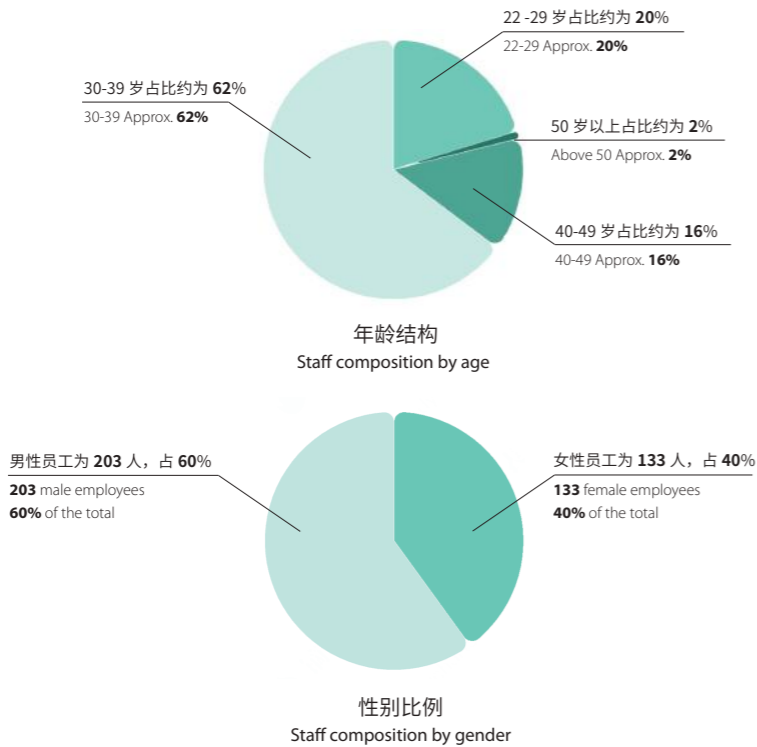
In Sino-Ocean Capital, recruitment and dismissal policies are implemented strictly following the applicable laws and regulations of the state. Discriminations against sex or age are strictly prohibited in the hiring process. Health check for new employees strictly abides by the provisions of the labor law of the country, free of any items which may lead to non-compliance. As of November 26, 2021, we had a total of 336 employees.

公司前台分为 7 个中心，分别为：不动产投资业务中心、房地产投资业务中心、股权投资业务中心、结构化投资业务中心、资本市场投资业务中心、基金业务中心、投后与资产运营业务中心。

In Sino-Ocean Capital, the front-office team can be divided into seven centers, which are the Real Estate Investment Business Center, the Property Investment Business Center, the Private Equity Business Center, Structured Investment Business Center, Strategy and Innovation Investment Business Center, Capital Market Business Center, Fund Business Center.

公司中后台分为 5 个部门，分别为：投资业务部、战略发展部、风险合规部、财务管理部、组织发展部。

In Sino-Ocean Capital, the middle and back office consists of five departments, which are the Investment Business Department, Strategic Development Department, the Risk and Compliance Department, the Financial Management Department, Organizational Development Department.



2) 薪酬激励机制 / Compensation and Incentive Mechanism

远洋资本维护员工合法权益，遵守相关法律，提供公平和具有竞争力的薪酬和福利，坚持实施市场化的人力资源管理体系，充分借鉴金融行业市场实践，形成系统化的激励机制，以吸纳及保留优秀人才，同时淘汰不合格员工，有效支撑业务战略达成。

Sino-Ocean Capital safeguards the rights and interests of employees, abides by the applicable laws, and offers fair and competitive salaries and benefits. Committed to a market-oriented human resources management system, we learn from the market practices of the financial industry vigorously, and put in place a systematic incentive mechanism which not only enables us to attract and retain competent employees, but also to phase out those unqualified, hence underpinning the realization of business strategies effectively.

合理的薪酬水平及薪酬考核体系 / Appropriate Salaries and a Reasonable Compensation Appraisal Framework

业绩奖金 Performance Bonus

包含年度奖金与附带权益计划（Carry）两部分。高管的业绩奖金与公司整体经营业绩（利润）及个人所管业务的收益挂钩，其他员工的业绩奖金则与团队业绩及个人绩效表现挂钩。

Performance bonus is comprised of two parts: annual bonus and a carried interest plan. For senior executives, their performance bonus is linked to Sino-Ocean Capital's overall business results (profits) and the income of business in their respective charge. The performance bonus of the other employees is related to the business results of their own and their team.

附带权益计划 (Carry) Carried Interest Plan

参考基金行业的通行做法，远洋资本向基金的关键员工分享一定比例的超额收益，分配的对象仅限于影响基金收益的核心人员，包括基金投委会委员、募投管退各个环节的关键人员，依据贡献确定具体分配比例。公司会在项目投出时与投后管理过程中向关键员工分配 carry 点数，基金退出后分配实际收益。

With reference to the common industry practice, Sino-Ocean Capital shares certain percentage of its profits with key personnels through Carried Interest Plan. The distribution of such returns is limited to the core personnel who have profound impact on the fund performance, including the members of the fund investment committee and the persons playing a pivotal role in the fund raising, investment, management and exit. The specific distribution ratio shall be determined by personal contribution. We will allocate carry points to key employees, at the time when a fund investment is made and during its post-investment management. Real earnings will be distributed after the fund exits.

风险准备金机制 Risk Reserve Mechanism

远洋资本要求，投委会及投资团队关键人员对所投项目支付一定额度的风险准备金。当项目安全退出，达到或部分达到基金目标收益时，全额或部分返还员工风险准备金，当项目未达基金门槛收益，全额扣除风险准备金。

Sino-Ocean Capital requires the investment committee and key personnel of the investment team to pay a certain amount of risk reserves for their invested projects. When the projects exit safely and their yield targets are met wholly or partially, the aforesaid risk reserves will be released in full or in part. If the projects fail to reach their hurdle rate, all of the paid risk reserves shall be withheld.

基金跟投机制 Fund Co-investment Mechanism

远洋资本要求，投委会及投资团队关键人员对所投资基金进行跟投。公司为每个基金设立员工跟投平台，跟投人员持有基金份额，与投资人收益共享、亏损共担；通过利益绑定实现提升员工风险管理意识以及风险敏感度，充分体现约束机制。

Sino-Ocean Capital requires the investment committee and key personnel of the investment team to co-invest in the funds the company has invested in via an investment platform set up by the company for each fund. Co-investors hold fund units and share gains and losses with other investors. With skin in the game, the risk management awareness and risk sensitivity of employees will be enhanced, manifesting the effect of the restraint mechanism.

3) 基本权益保护 / Protection of Basic Rights and Interests

远洋资本实施人性化的管理理念，全方位关爱员工，激发员工活力，关注员工健康，为员工创造安全、健康的工作环境。

Sino-Ocean Capital pursues a people-oriented management approach. We show all-around care for our employees, try to stimulate their vitality, and pay adequate attention to their health. We do everything possible to create a safe, healthy working environment for the entire staff.

严格落实防疫措施，全力确保防疫安全

严格落实常态化防疫措施，积极推进全员疫苗接种，全力确保防疫安全。按需组织员工进行核酸检测，便利员工出差，支持业务发展，有力配合属地政府的防疫工作。积极响应国家疫苗接种号召，督促鼓励员工接种新冠疫苗，构筑自我疫情防护屏障。自疫情爆发以来，未发现确诊或疑似病例，各项防控措施得到有力落实。

We implement regular epidemic prevention measures, promote vaccination for the whole staff, and spare no effort to ensure epidemic prevention safety. We organize nucleic acid tests for employees when necessary to facilitate employees' business trips, support the business development, and cooperate with the local government in epidemic prevention. Besides, we respond to the national call for vaccination, encourage employees to get vaccinated, and enhance the immune system against COVID-19. Since the outbreak of the epidemic, we have had no confirmed or suspected cases, and properly implemented various prevention measures.



严格落实防疫措施，全力保障员工安全

Pandemic containment measures are introduced to protect the health and safety of employees as stringently as possible

创新开展特色活动，彰显企业文化传播

员工活动既有植树环保、公益长跑等社会公益内容，又有龙舟赛、登山赛、趣味运动会等竞技比赛，司庆日、“女神节”、儿童节及手工DIY等特色活动的加持，更是丰富了员工每季、每月的活动日历。篮球、足球、羽毛球、乒乓球、网球等兴趣活动的开展，构建起健康、多样、丰富的员工活动体系，彰显了企业文化的传承和流动，激发了团队的竞争意识，营造了团结拼搏的文化氛围，增强了全员的凝聚力和向心力。

In Sino-Ocean Capital, innovative and characteristic activities are carried out to highlight the inheritance of corporate culture. Employee activities include social welfare activities such as Tree Planting and Long-distance Running for Public Welfare, competitions like dragon boat racing, mountain-climbing competition and sports meeting for fun as well as other special activities such as the Company's Day, Goddess Day, Children's Day and DIY, which enrich the employee's quarterly and monthly activity calendar. Moreover, a healthy and diverse employee activity system has been built with the development of interest activities such as basketball, football, badminton, table tennis and tennis, highlighting the inheritance and renovation of corporate culture, stimulating the team's sense of competition, creating a cultural atmosphere of solidarity and working hard, and enhancing the cohesion and loyalty of the whole staff.



丰富多彩的特色员工活动 / Rich staff activities in various forms



全面加强员工关爱，贴心满足员工需求。全年不间断为员工提供餐品茶饮，分享二十四节气养生知识，构建多元化的员工福利体系。医疗诊室、中医理疗、健身房走入员工职场。生日会、迎新会、庆功会、公司慰问传导了企业对员工的关心关爱，增强了员工对企业的归属感。

Sino-Ocean Capital cares for employees' life and meets their needs in all aspects. We provide meals, tea and drinks for employees all year round, share health-care knowledge regarding 24 solar terms, and build a diversified employee welfare system. Medical consulting room, TCM physiotherapy and gym are set in the workplace. Birthday parties, orientation parties, celebrations and visits expressing condolences convey our concern and care for our employees and enhance their sense of belonging.



员工生日会及项目庆功会 / A glance of our birthday party and victory party

利用被投企业资源，充分提供优惠便利

让员工享受被投企业的优质产品和服务，为员工争取生育、教育、食品等多方面的优惠和便利，同时也促进被投企业的业务发展。“我的健康我做主”主题健康季活动的推出，形成了与被投企业沟通互动的新纽带，也帮助员工健全健康知识体系，关注自身健康状态，提升身心健康健康水平。

In Sino-Ocean Capital, employees have access to the high-quality products and services offered by the invested companies. While providing our staff with more benefits and conveniences in a wide range of fields such as fertility, education, and food, we can also help improve the business of the invested companies. We rolled out a quarterly health-themed campaign "My Health, My Rule" to popularize health knowledge among employees, raise their awareness of caring for their health condition, and improve their physical and mental health. The campaign also acted as a new bridge for communication and interaction with the invested companies.



amcare
Women's and Children's Specialized Health
美中宜和医疗



联合丽格
bcc



仕馨月子会所
SHESLIM POSTPARTUM CARE CENTER



美德因特兒醫院
MADEIN HOSPITAL
メイドイン母子病院

北京孕检、分娩享受大客户优惠政策，深圳、杭州城市优惠力度不同。

Female employees in Beijing can receive pregnancy tests and delivery services at a Sino-Ocean Capital exclusive discount. The discount rate may vary for those in Shenzhen and Hangzhou.

所有服务享受远洋员工折扣。

All service and product are offered at a discount exclusive to Sino-Ocean Capital employees.

当月该店面的最低价 + 1880 元的大礼包。

Employees can have the monthly lowest price, along with a gift pack worth RMB1,880.

可在最低价基础上再享受 9.5 折优惠。

Employees can take an additional 5 percent off the lowest price.



美中爱瑞
arion cancer hospital



信良記
XINLIANGJI



JIUYE
九曳供应链 Supply Chain

根据选定产品，享受远洋员工专属就诊优惠

A discount of Sino-Ocean employees is offered, based on the selected products and service.

所有成品及礼品卡均享受远洋员工内部价。

All finished meals and gift cards are offered at a discount exclusive to Sino-Ocean Capital employees.

根据产品类型，最低可享受 8 折优惠。

A discount of up to 20% is available, according to product types.

员工享受的部分受资实体优质产品及服务 / Some high-quality products and services of the invested companies available for employees.

秉承建筑健康理念，打造舒适办公环境

以“员工心中的好去处”为出发点和落脚点，精心设计规划办公区、会议区、休闲区、观赏区及辅助功能区，持续为员工打造智能、环保、便捷、贴心的办公环境。艺术品陈设区和员工图书角进一步提升了职场的人文气息。

To provide employees with a comfortable working environment, Sino-Ocean Capital elaborately designed office zone, conference zone, relaxing zone, viewing zone and auxiliary zone according to the concept of healthy building, to offer an intelligent, environment friendly, convenient and considerate working environment. Artworks display zone and reading corner fully illustrate attentive care for employees.



4) 员工发展 / Employee Development

远洋资本自成立以来，一直对员工的培训与发展非常重视。除了提供专业的学习平台外，一直致力于建立和完善符合业务发展的培训机制和体系，帮助员工持续成长。目前已搭建起了内部学习分享平台、专业力培训平台、通用力培训平台、角色转换类培训平台、企业文化类培训平台等多个培训项目及人才培养机制，宗旨是为远洋资本挖掘和发现人才、培养和输送人才。

Since our establishment, Sino-Ocean Capital has always attached great importance to employee training and development. In addition to providing a professional learning platform, we have been long committed to putting in place many sound training mechanisms and systems that not only are suited to business development but also encourage employee development. So far, a number of training programs and mechanisms have been set up in Sino-Ocean Capital, which include the internal learning & sharing platform, the professional skills training platform, the general skills training platform, and the corporate culture training platform. All of them are aimed to spot, train, and turn out competent people for Sino-Ocean Capital.

远洋资本的培训工作将由传统的单一培训，逐渐向项目型、系统化的人才培养模式过渡，将秉承着“远见未来、共创价值”的理念，以培养“有眼光的投资人”、“有情怀的投资人”为指导思想，努力为远洋资本发展成为“全球卓越的另类投资管理公司”而助力。

Sino-Ocean Capital will transform our training work from the existing single-training mode to a project-based pattern of systematic talent cultivation step by step. Upholding the concept of “thinking ahead and creating value together” and following the cultivation of “foresighted, passionate investors” as a guide, the training work will provide an impetus to our vision of “developing into an global outstanding alternative asset management company”.

公司的学习发展工作以“721”人才培养模型为基础，为业务职能提供经过系统培养并富有奋斗进取精神的优秀人才。公司坚持各级“负责人”是员工培养的第一责任人的理念，由“负责人”结合日常工作对员工进行辅导反馈，并结合人才发展工具制定及落实学习培养计划，推动员工成长。通过远洋资本组织的各类培训，员工可以深度了解、认同、践行远洋资本的价值观和文化，形成归属感。同时，员工可以亲身体验业绩导向的文化，培养职业意识和技能，培养团队合作精神，熟悉远洋资本战略与管理之道，借鉴经理人的成功经验，树立起为远洋资本事业奋斗的抱负，在远洋这个平台上更快更好地成长。

We base our employee learning and development work on a “721” personnel training mode, so as to provide business lines and functional departments with the staff members well-trained and full of initiative. “Responsible person” at all levels are deemed as the first persons responsible for employee training. Responsible person provide guidance and feedback to employees based on the routine work. With talent development tools, they also formulate and implement learning and training plans to promote employee development. By attending various training activities organized by Sino-Ocean Capital, employees are expected to fully understand, recognize and practice our values and corporate culture, thereby generating a sense of belonging from the bottom of their heart. Besides, employees have the chance to personally experience the performance-oriented corporate culture, develop a professional awareness, required skills, and teamwork spirit, and get familiar with our strategy and management style. Inspired by successful managers, they will take Sino-Ocean Capital’s vision as their own ambition, and seek to grow stronger and faster on the platform we provided.



形式多样的员工培训活动 / Employee training activities of various forms

远洋资本十分注重品牌形象的树立,积极参与各项社会公益活动,通过企业与个人的实际行动为社会慈善事业做出不懈努力。

In Sino-Ocean Capital we cherish our brand image. We actively participate in various social activities for public good. The concrete efforts made by us and our employees contribute to the development of philanthropy industry in China.

1) 品牌声量及舆情处理 / Brand Reputation and Public Opinion Response

新闻宣传是企业与利益相关方沟通的重要途径。远洋资本高度重视品牌形象的树立,积极接受媒体监督,与《投资界》、《中国证券报》、《经济观察报》、融资中国、36Kr 等具有行业影响力的权威财经媒体开展深度合作;强化舆情动态监控和自有新媒体平台管理,主动、及时地披露企业经营动态和履责实践,充分发挥媒体平台传播广、速度快、交互性强等特点,不断创新传播手段和渠道,引导正确舆论导向,树立和传播负责任的企业形象。

Public information campaigns provide an important way for companies to communicate with their stakeholders. Sino-Ocean Capital attaches high importance to the establishment of a positive brand image. We welcome media's supervision, and conduct in-depth cooperation with many influential financial media outlets including PEdaily.cn, *China Securities Journal*, *Economic Observer*, *Chinese Venture*, and 36Kr. At the same time, actively monitor the public opinions, actively manage the self-owned new media platforms, and disclose our business developments and duty performance practices in a proactive, timely manner. To fully utilize the width, speed and interactiveness brought about by the new media platforms, we make full of the innovative communication methods and channels, and guide public opinion towards the right track, thus creating and burnishing our image as a responsible corporate citizen.



远洋资本官方网站及宣传册 / Official website and brochure of Sino-Ocean Capital

远洋资本统一建立全年传播计划,并对各控股企业、平台公司的全年传播形成指导方向。该年度计划由主管条线的公司高管及公司总经理审批后贯彻执行。各控股公司、平台公司需结合自身经营管理及业务开展需求制定年度传播计划。远洋资本品牌职能模块会按照月度组织收集重大业务进展线索、各控股公司及平台公司每月的传播计划,以全面了解各业务单位的传播安排,并给予专业建议并合理调配媒体资源。

Sino-Ocean Capital maps out the concerted annual communication plan, and provides overall guidance for the annual communication of our holding companies and platform companies. The annual plan will become effective after approved by the senior executive in charge of the line and the General Manager. All holding companies and platform companies should formulate their separate annual communication plans, based on their own needs for operation management and business development. In Sino-Ocean Capital, the brand function line will collect information of major business progresses every month, and formulate the monthly communication plans from holding companies and platform companies, in a bid to fully understand the communication arrangements of each business unit, offer professional advice, and allocate media resources efficiently.

此外,远洋资本已形成《舆情处理方案》,对舆情危机处理的全流程进行了责任分工及管控,并与一家国内领先的金融行业舆情监测机构合作,对远洋资本自身、控股公司、投资项目、子品牌等进行舆情监测。一旦发现负面及敏感新闻,将迅速启动应急预案,对危机预警进行分类,并及时联动相关业务团队、控股企业、子品牌负责人等进行处理,同时做好品牌修复等后续等工作,以维护公司正面、良性、健康的企业形象。

In addition, Sino-Ocean Capital has compiled the *Public Opinion Response Plan*, which sets out the division of responsibilities and the procedures for public opinion crisis response. We have also partnered with a leading financial public opinion monitoring agency in China to track public opinion on Sino-Ocean Capital, as well as our holding companies, investment projects, sub-brands, etc. Once negative or sensitive news is detected, the contingency plan will be quickly activated, according to which the crisis forewarnings will be graded and classified, and the relevant business teams, holding companies, and sub-brand leaders will be coordinated to take response in a timely manner. At the same time, the follow-up steps such as brand restoration will be taken to maintain the positive, healthy corporate image of us.

2) 公益慈善 / Public Welfare

远洋资本作为远洋集团的成员企业,是其可持续发展工作组的常规成员。通过远洋集团的企业社会责任履行平台远洋之帆公益基金会,积极参加各项社会公益活动。作为远洋之帆公益基金会的公益伙伴,远洋资本通过企业与个人的实际行动为社会慈善事业做出不懈努力。

As part of Sino-Ocean Group, Sino-Ocean Capital is a regular member of its sustainable development team. Through Sino-Ocean Charity Foundation, we actively participate in a variety of public benefit activities. As member of Sino-Ocean Charity Foundation, with the unremitting efforts made by ourselves and our employees, we get closely involved in the Chinese society and philanthropy.



众志成城，抗击疫情 / Unite as One in the Fight against the COVID-19 Pandemic

新冠肺炎疫情爆发后，远洋集团迅速通过其全资设立的远洋之帆公益基金会，先期设立 1000 万元的抗击新冠肺炎专项基金，通过资金支持、物资支持等方式定向用于湖北武汉等多地的疫区前线抗击及防治工作。同时，专项基金持续关注疫情进展，对有可能引发的次生灾害，向一线提供坚强支持，对受困者群体予以持续性的跟进和关怀，为疫情后后期问题处理提供帮助。同时，远洋资本严格落实常态化防疫措施，积极推进全员疫苗接种，全力确保防疫安全。自疫情爆发以来，未发现确诊或疑似病例，各项防控措施得到有力落实。

In 2020, after the outbreak of COVID-19, Sino-Ocean Capital Group, set up a special pandemic relief fund of RMB10 million through its wholly-owned Sino-Ocean Charity Foundation. The money was directly donated or spent on buying and sending supplies to Wuhan and other pandemic-affected areas in support of the front-line prevention and control work. At the same time, the special fund stayed tuned to the ongoing development of the pandemic situation, provided strong support to the front line in case of possible secondary disasters, offered continuous attention and care to the affected groups, and helped reconstruction in the post-pandemic era. Meanwhile, We implement regular epidemic prevention measures, promote vaccination for the whole staff, and spare no effort to ensure epidemic prevention safety. Since the outbreak of the epidemic, we have had no confirmed or suspected cases, and properly implemented various prevention measures.

与此同时，远洋资本的被投企业也都纷纷发挥自身优势、调动资源，以力所能及的方式驰援疫区：

In the meantime, Sino-Ocean Capital invested companies have all leveraged their respective advantages, mobilized all sorts of resources, and did everything possible to help the pandemic-stricken areas overcome their difficulties:



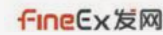
壹米滴答旗下优速快递、壹米滴答快运在全国范围内开通免费向武汉地区运输配送救援物资的绿色通道服务，全力支援武汉人民抗击新型冠状病毒，直至当地物资紧缺问题得到解决。

Yimidida arranged its affiliated brands UC Express and Yimidida Express to open up a green channel through which anti-pandemic supplies could be fast delivered to Wuhan from any other parts of the country free of charge. The two went all out to support the people of Wuhan in the fight against the coronavirus, until local medical supplies were no longer in shortage situation.



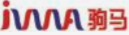
九曳供应链宣布开通绿色通道：向各地政府、公益组织、国内外疫情防控相关物资生产企业、支援行动机构等组织，提供武汉仓的冷冻冷藏类食品物资的免费仓储服务，并同步部署全国一线工作人员的安全防护和保障工作，以确保既有货物和救援物资的安全储存。

Jiuye Supply Chain announced to open a green logistics channel, through which it could store the frozen and refrigerated food supplies that local governments, public welfare organizations, anti-pandemic supplies manufacturers at home and abroad, and various support/action agencies sent to Wuhan in its local warehouses free of any charge. At the same time, it also provided safety protection and support for the front-line workers across the country, to ensure the safe storage of existing goods and relief supplies.



发网物流承诺，相关医疗防护物资可即刻入驻发网苏州吴江仓、天津北辰仓、西南成都仓，并免除疫情期间所有仓租及库内操作费用。

FineEx opened its warehouses in Wujiang of Suzhou City, Beicheng of Tianjing City and Chengdu in Southwest China starting to store medical protection supplies, with all warehouse rents and field operation costs exempted during the pandemic response.



驹马物流联合壹米滴答、福佑卡车、狮桥运力、美菜网、货拉拉、闪送、G7 等 17 家物流平台展开联合行动，共同驰援湖北。为确保救援物资和运力资源得到快速匹配与响应，还特别成立了信息发布平台搭建专项工作组。

Juma Logistics joined hands with 17 other logistics platforms including Yimidida, Fuyoukache.com, SQ Capital, Meicai.cn, Huolala.cn, Ishansong.com, and G7 to launch joint operations in support of Hubei. A special working group was created in charge of building an information release platform, so that relief supplies and transportation capacities could be matched quickly.



美中宜和特别为孕产妇及儿童开通线上咨询服务。考虑到孕产妇及婴幼儿免疫力相对较低，属于防护病毒的高危人群，为避免交叉感染，美中宜和自 1 月 24 日起通过微信公众号开通线上咨询专线，为发热孕产妇及婴幼儿提供“5 分钟速诊”服务，非发热用户亦可通过专线开展医疗咨询。

Amcare launched an online consultation service for pregnant women and children. Given their relatively weak immunity, pregnant/lying-in women, newborns, and children all are at greater risk of contracting Covid-19. To avoid unnecessary cross-infection, Amcare opened up an online consultation hotline through its WeChat public account from January 24. Pregnant women and children with fever could be diagnosed within five minutes after dialing the hotline. Besides, patients without fever were also able to seek for medical consultation through the dedicated line.



甲乙丙丁紧急动员各省门店，为全国范围内所有前往湖北救援车辆提供免费道路救援服务，积极保障相关政府公务及救援车辆的出行道路安全。为方便就近获得救援，甲乙丙丁网公布了全国所属 670 家商用车救援服务门店，呼吁更多有爱心、有服务能力的商用车门店加入道路救援志愿服务。

JYBD (Beijing) Electronic Commerce Co., Ltd. (JYBD) urgently mobilized its stores in different Chinese provinces to provide free road rescue services for all vehicles that headed for Hubei for pandemic response from all over the country, in an effort to ensure the traveling safety of official and rescue vehicles. To make sure those in need get rescue services nearby, JYBD opened all of its 670 commercial vehicle rescue service stores nationwide online, calling on more qualified stores to join its road rescue-related volunteer services.



联合丽格积极响应重庆市渝中区卫生健康委员会下发的关于《征集新型冠状病毒感染的肺炎防控工作人员和物资的紧急通知》，集团西南片区医务工作人员积极主动报名请缨，自愿参与到抗击新型肺炎的防控工作中：重庆联合丽格医务部主任宋安莉带队加入渝中区卫健委志愿服务队，非手术中心护士长支援四川广安肺炎防控工作；郑荃丽格非手术中心护士长支援渝北区肺炎防控工作。

BeauCare actively responded to the *Emergency Notice on Personnel and Supplies Collection for the Novel Coronavirus-infected Pneumonia Prevention and Control* issued by the Chongqing Yuzhong District Health Commission. The medical staff in the southwest division of the group rushed to sign up and volunteered to join the fight against the coronavirus. At Chongqing BeauCare, Medical Director Song Anli led a team to join the volunteer service taskforce initiated by the Yuzhong District Health Commission, and the head nurse of the non-surgical center supported the pandemic prevention and control work in Guangan, Sichuan. At Dr. Zheng BeauCare Clinic, the head nurse of the non-surgical center worked to prevent and control the pandemic in Yubei District.



卡力互联为保障武汉地区救援物资的运输，成立由企业 CEO 负责的应急工作小组，自即日起正式开通全国各地驰援武汉救援物资的绿色通道，向地方政府、医疗机构、公益组织、企事业单位和医疗器械生产企业等机构组织开放，并调配专人核实并快速响应物资运输需求。

To facilitate the transportation of relief supplies in Wuhan, KALIHL (Shanghai) Co., Ltd. (KALIHL) established an emergency work team charged by its CEO. From the day when the team was recruited, KALIHL officially opened a green channel through which local governments, medical institutions, non-profit organizations, enterprises and public institutions, and medical device manufacturers, among others, could send relief supplies to Wuhan from all over the country. Besides, it deployed full-time personnel to verify and quickly respond to any supply transportation needs.



与瑞德医疗在运营方面展开合作的铁岭市中医医院作为辽宁省援助湖北的支援医院之一派出 3 名护理人员进行增援；合作的郴州市第三人民医院 100 余名医护人员向院党委提交要求加入抗击新型冠状病毒感染肺炎一线防治工作请战书，并派出多名医护人员在郴州高铁站、火车站等场所开展防控排查工作。

As an operational partner of RYZUR, Tieling Traditional Chinese Medicine Hospital sent three nurses to support Hubei on behalf of Liaoning Province. Another partner of the medical group, the 3rd People's Hospital of Chenzhou City received a petition from more than 100 medical staff members for working on the front line of the COVID-19 control. Besides, the hospital sent a number of medical staff to carry out the coronavirus prevention, control and screening work at local high-speed railway station, railway station and other venues.



规矩建设作为远洋资本在大物流行业践行“轻重并举”投资理念的代表性受资实体，有三分之一以上的员工籍贯湖北，其中不乏一些来自于疫情“重灾区”武汉的员工。为帮助家乡人民共度难关，公司决定向湖北武汉捐赠现金 50 万元用于此次新冠肺炎的疫情防控。

As a typical company in which Sino-Ocean Capital has invested to show its equal importance to asset-light and asset-heavy investment in the logistics industry, Guiju Construction has more than one-third of employees native to Hubei, many of whom are from Wuhan, the epicenter of the pandemic crisis. To help the people in their hometown tide over the difficulties together, the company decided to donate RMB500,000 in cash to Wuhan in support of the pandemic prevention and control efforts.



远洋资本 ESG 负责任投资体系搭建建议

Proposals on the Establishment of the ESG investment Framework in Sino-Ocean Capital

综合来看，ESG 负责任投资理念的传播以及 ESG 负责任体系在企业治理及业务发展中的应用，能为企业健康、有序、长久发展带来推动力，逐步搭建远洋资本 ESG 负责任投资体系成为重点解决的工作。

Taken together, embracing the ESG concept and applying its principles in daily government governances and business operation can serve as a lasting impetus for a company's healthy and orderly development over the long run. framework in corporate governance and business development can bring an impetus to the healthy, well-sequenced development of an enterprise over the long run. In this sense, gradually building an ESG investment framework is a key task facing Sino-Ocean Capital.

建立 ESG 负责任投资虚拟小组（试运行） Establishment of the Virtual Team in charge of ESG investment (Trial Run)

按照 ESG 负责任投资原则，在公司内部搭建虚拟工作小组。在公司管理层的领导之下，ESG 负责任投资工作小组由战略发展部品牌模块牵头，定期向公司中后台各相关部门及控股企业等单位收集相关话术、数据指标、最新进展等素材信息。

Instructed by the ESG investment principles, a dedicated team is formed to establish within Sino-Ocean Capital in charge of establishing an ESG investment framework. Under the leadership of Sino-Ocean Capital's management, the team is led by the brand line of the Strategic and Development Department, and regularly collects the related glossaries, data indicators, latest developments, and other materials from the units we concerned, which include the departments in the middle and back offices and holding companies.





形成 ESG 负责任投资虚拟小组运行制度

Forming the Operation System of the Virtual Team in charge of ESG investment

公司管理层负责 ESG 相关工作的总体规划、战略方针的制定、相关重大事项的审议与决策，协调解决 ESG 相关工作开展过程中的重要问题。

In Sino-Ocean Capital, the management is responsible for the overall planning of ESG work, mapping out strategic guidelines, discussing and deciding major relevant matters, and coordinating efforts to resolve important problems that arise from the ESG work.

ESG 负责任投资虚拟小组在公司管理层的领导之下，负责推进 ESG 日常管理工作，包括编制工作报告、开展主题活动、组织培训宣导、征集优秀案例等。

The Virtual Team in Charge of ESG investment (hereinafter referred to as “the Virtual Team”), under the leadership of Sino-Ocean Capital’s management, is tasked to manage the ESG work on a daily basis, which involves preparing work reports, launching themed activities, organizing training and publicity sessions, and collecting typical cases.

各中心及部门执行对接人对口 ESG 负责任投资虚拟小组，负责各相关 ESG 议题的归口管理，对本职能模块相关落实情况跟踪、督促和效果评估，并及时总结报送相关管理举措、绩效指标及优秀案例等经验成果。

The executive liaisons keep in touch with the Virtual Team on behalf of the centers and departments that designate them, responsible for managing related ESG issues in a centralized way, tracking, supervising and evaluating the implementation results under their respective functional line, and submitting the solicited management measures, performance indicators, success cases, and other forms of experience in a timely way.

ESG 负责任投资虚拟小组实行重大问题集体会议讨论制度，根据工作需要不定期召开会议，听取 ESG 工作情况汇报，讨论决策重大事项，研究解决工作难点热点问题。

The Virtual Team decides major issues through collective discussion. Meetings are held from time to time according to actual work needs, where team members can listen to reports on ESG work, discuss major issues before decisions are made, and look for solutions to challenges and problems.

撰写远洋资本 ESG 负责任投资报告

Preparation of the ESG investment Report

远洋资本 ESG 负责任投资报告由战略发展部品牌模块牵头组织编写，各业务中心、职能部门、控股企业汇总并提交 ESG 负责任投资工作完成情况，战略发展部品牌模块完成汇总之后进行定期更新及发布。

In Sino-Ocean Capital, the ESG investment report compiled under the leadership of the brand line, affiliated to the Strategic Development Department. All business centers, functional departments, and holding companies shall summarize how their ESG investment is done and submit the findings to the above module, so that they can be summarized before regular updates and releases are made.

远洋资本 ESG 负责任 投资案例

ESG investment Cases in Sino-Ocean Capital

绿色产业责任投资 – 大环保投资

Responsible Investment in Green Industry : Environmental Protection Investment



中国领先的固废回收技术 / Solid Waste Recycling Technologies that Lead China

2017 年，远洋资本战略投资北京盈创再生资源回收有限公司（简称“盈创回收”），成为其控股股东。盈创回收成立于 2003 年，目前是亚洲单线产能最大的再生瓶级聚酯切片生产企业，其生产工艺达到美国 FDA、欧洲 ILSI 国际标准，填补了我国再生瓶级聚酯切片高新技术的空白，同时还是目前国内唯一能够生产食品级再生聚酯切片的企业，也是中国领先的“智能固废回收自助机具及回收系统整体解决方案”运营商和提供商。

In 2017, Sino-Ocean Capital strategically invested in Beijing Incom Renewable Resources Recycle Co., Ltd. (“Incom Recycle” for short), becoming its controlling shareholder. Incom Recycle, established in 2003, is currently a bottle-grade PET chip manufacturer with the largest single-line production capacity across Asia. Its production technologies are sophisticated enough to reach the international standards set out by the US-based Food and Drug Administration (FDA) and the Europe-based International Life Sciences Institute (ILSI), filling the gap of China in this field. Furthermore, Incom Recycle is currently the only Chinese company capable of producing food-grade recycled PET chips, and also one of China's leading providers of self-service machines for intelligent solid waste recycling and integrated recycling system solutions.



清洁能源在物流地产领域的应用 / Application of clean energy in logistics and real estate

领航中国的物流基础设施投资开发运营与资产管理平台

China's leading platform for logistical infrastructure investment, development, and operation and asset management

远洋物流隶属于远洋资本，具备项目投资、规划设计、工程建设、物业管理等覆盖物流地产全流程的专业能力，能为客户提供高标仓库、冷链仓库等多样化的物流仓储解决方案，并在清洁能源使用、数智化运营方面持续探索，实现项目开发、经营的可持续发展。

Affiliated to Sino-Ocean Capital, Sino-Ocean Logistics is known for its professional expertise in all aspects of the logistics real estate landscape from project investment, planning, and design, to engineering, construction, and property management and its provision of diverse logistics and warehousing solutions for customers such as high-standard warehousing and cold chain warehousing. Meanwhile, Sino-Ocean Logistics continues to explore the use of clean energy and digital and intelligent operation so as to achieve sustainability in project development and operation.

2022 年初，远洋物流北京顺义园区分布式光伏项目顺利实现并网投产，通过安装单晶硅光伏组建，采用分块发电、集中并网的方案，为园区提供清洁电能，减少二氧化碳排放量，不仅可以满足企业租户能耗优化需求，更是清洁能源技术在物流地产领域的重要实践。未来，远洋物流将以更加友好的运营方式，联合客户及合作方挖掘利用“新材料、新能源、新技术”，促进产业链各端实现节能减排、降本增效。

At the beginning of 2022, the distributed photovoltaic project was successfully connected to the grid for power generation in the industrial park of Sino-Ocean Logistics in Beijing's Shunyi District. The installation of monocrystalline silicon photovoltaics enables the solution of distributed power generation and centralized power supply and provides clean electricity for the park with reduced carbon emissions. It not only meets the need of corporate tenants for optimized energy consumption but also represents an important practice of applying clean energy technologies to the logistics real estate sector. In the future, Sino-Ocean Logistics will continue to join hands with clients and partners in a more eco-friendly operation mode and explore “new materials, new energies, and new technologies” for better energy conservation, emissions reduction, costs cut, and efficiency enhancement across the industrial chain.



绿色生态环境建设 / Green Eco-friendly Environment

航天凯天环保科技股份有限公司（以下简称“航天凯天环保”）为中国航天科工集团旗下控股公司。中国航天科工集团是中央直接管理的国有特大型高科技企业，是世界 500 强企业，拥有多个国家重点实验室、技术创新中心、成果孵化中心以及专业门类配套齐全的科研生产体系。航天科工着眼于“大防务、大安全”发展理念，大力发展军民融合产业，并积极响应国家绿色发展的号召，进军环保产业，将航天凯天环保打造为业内领军企业。

Aerospace Kaitian Environmental Technology Co., Ltd. (hereinafter referred to as “Aerospace Kaitian”) is a holding company of China Aerospace Science and Industry Corporation (CASIC), a state-owned, high-tech giant directly managed by the Chinese government and an entrant to the list of Fortune 500 companies. CASIC possesses a number of national key laboratories, technological innovation centers, business incubators, as well as a complete set of scientific research and production systems that cover various disciplines and fields. Focusing “generalized defense and extensive security”, it has vigorously developed the industries conducive to military-civilian integration. As an active response to the national call for green development, it has marched into the environmental protection industry, with a vision to build Aerospace Kaitian into a leading enterprise in the industry.

航天凯天环保于 1998 年与德国百年环保企业合资成立，是一家集环境规划、环保产品研发设计、装备制造、工程安装、设施运营为一体的绿色生态环境综合服务商，以绿色生态环保智慧城市、绿色生态美丽乡村、绿色生态工业园区和绿色生态健康家庭为核心业务领域，是国家环保部授予的首批 17 家环境服务试点单位、“AAA”级环保信誉企业及中国环保产业协会副会长单位。公司以“做百年企业，创世界品牌”为愿景，以技术创新、商业模式创新和管理创新为统领，充分发挥航天科工的人才优势、技术优势、资本优势和产业协同优势，为生态文明、美丽中国建设做出积极贡献。

Aerospace Kaitian was established as a joint venture in 1998 with a Germany-based century-old enterprise engaged in environmental protection. It is integrated with many functions, including environment planning, R&D and design of environmental products, equipment manufacturing, engineering installation, and facility operation. Aerospace Kaitian is a comprehensive eco-service provider, with its business focused on four areas, namely, green smart cities, eco-friendly beautiful villages, green industrial parks, and eco-friendly healthy households. Aerospace Kaitian has been recognized as one of the first 17 pilot eco-friendly enterprises by the Ministry of Environmental Protection, an AAA-rated enterprise in the environmental protection industry, and a deputy director member of China Association of Environmental Protection Industry (CAEPI). Aerospace Kaitian has the vision to become a century-old brand renowned worldwide. Driven by innovative technologies, business modes, and management methods, Aerospace Kaitian fully leverages CASIC’s advantages in human resources, technologies, capital, and industry synergy, doing its part to the construction of a beautiful China.



海绵城市建设 / Sponge City Building

仁创生态环保科技股份有限公司，成立于 2005 年 5 月，致力于海绵城市建设、黑臭水体治理、土地综合整治，是集投资、规划、设计、施工、运营于一体的生态环境综合治理运营商，是国家级高新技术企业。

Rechsand Ecological Technology Co., Ltd., established in May 2005, is committed to sponge city building, black and odorous water treatment, and comprehensive land improvement. It is a comprehensive ecological environment management company that integrates investment, planning, design, construction, and operation together. It has been rated as a high-tech enterprise on the national level.

公司成立至今，获得了发明专利 87 项，实用新型专利 128 项，牵头制定了多项行业标准。产品和整体解决方案由于效果突出，在中南海、科技部、世博会中国馆、长安街、雄安新区、通州副中心、张家口冬奥会场馆等地标性区域和建筑上得到了广泛应用。2018 年，其雨水收集和再利用系统，率先在雄安新区得以应用。

Since its foundation, the company has obtained 87 invention patents and 128 utility model patents, and taken the lead to formulate a number of industry standards. Its products and integrated solutions perform so well that they have been widely used in many landmark buildings and areas such as Zhongnanhai compound (the political center of China), the Ministry of Science and Technology buildings, the China Pavilion at Expo 2010, Chang'an Avenue, Xiongan New Area, Tongzhou District (the sub-center of Beijing), and Zhangjiakou-based Winter Olympics venues. In 2018, its rainwater harvesting and reuse system was applied in Xiongan New Area before any of its counterparts.



危废处置 / Hazardous Waste Disposal

大连建华污泥处理有限公司成立于 2002 年，是辽宁省危废处置标杆企业。公司自成立以来，始终秉承诚信和谐的发展理念，坚持对环境负责对未来负责的职业操守，遵章守法规范经营，在业内赢得了良好的信誉和口碑。2015 年更是投资 1.3 亿元建设了新工厂，及时更新了技术和设备。新工厂采用油泥热萃取、污泥脱水、废白土浸泡脱油等工艺技术对石化行业的含油污泥进行无害化处理，成为辽宁省内规模较大科技含量最高的污泥处理科技型环保企业。公司还多次参与大连市突发事件的应急抢险工作，是大连市应急抢险定点单位之一。2018 年 10 月以分散联合形式取得了省生态环境厅颁发的水泥窑协同处置的《辽宁省危险废物经营许可证》，成为辽宁省第一家取得该证的企业。

Founded in 2002, it is a benchmarking enterprise in Liaoning Province for hazardous waste treatment. Since its establishment, Jianhua has always pursued the development ideas of integrity and harmony, adhered to the work ethics of environmental protection and being oriented to the future, complied with regulations, abided by the law, operated in a standard way, and won a good reputation. In 2015, it invested RMB130 million in building a new factory and upgraded its technologies and equipment in a timely manner. By using technologies such as oil sludge hot extraction, sludge dewatering, and waste clay soaking & de-oiling for harmless disposal of oil-bearing sludge in the petrochemical industry, the new factory has become an environmental protection enterprise for sludge treatment, with a relatively size and high technologies. As a designated emergency rescuer in Dalian, Jianhua has taken part in the emergency rescue operations in Dalian for several times. In October 2018, Jianhua obtained the Liaoning Provincial Hazardous Waste Operation Permit for coordinated disposal of cement kilns from the Ecological Environment Department of Liaoning Province in the form of decentralized union, and became the first company of Liaoning Province that obtains the permit.



医废处置 / Medical Waste Disposal

郑州瀚洋天辰危险废物处置有限公司是从事环保产业建设、运营的专业环保型企业，目前正在运营“郑州市医疗废物集中处置中心”项目。郑州市医疗废物集中处置中心是郑州市唯一一家医疗废物无害化处置单位，为郑州 3000 余家医疗机构提供医疗废物的收集、运输与无害化处置工作。自 2004 年运行至今，运行状况良好，各项技术指标均符合国家相关要求。主要经营类别：感染类废物、病理性废物、损伤性废物、药理性废物、化学性废物（根据《国家危险废物名录》划分进行处置）等医疗性废物。

Zhengzhou Hanyang Tianchen Hazardous Wastes Disposal Co., Ltd. is an enterprise specializing in construction and operation of the environmental protection industry. At present, it is operating the project of “Zhengzhou Center for Centralized Disposal of Medical Wastes”. It is the only organization for harmless treatment of medical wastes in Zhengzhou and provides over 3,000 medical institutions of the city with services related to collection, transportation and harmless treatment of medical wastes. Since 2004, it has been in good operating conditions and all its technical indicators have complied with relevant state regulations. Its main business categories: medical wastes including infectious waste, pathological waste, hazardous waste, pharmacological waste, and chemical waste (disposal in accordance with China National Directory of Hazardous Wastes).

新兴产业责任投资 – 大健康 / 大数据投资

Responsible Investment in Emerging Industries: Healthcare / Big Data Investment



肿瘤精准医疗 / Oncology precision medicine

橡鑫生物总部位于北京中关村国家自主创新示范区，在北京和天津拥有总面积达 5000 平方米的检测研发中心。公司专注于新一代基因组学在肿瘤精准医学的应用和产业化研究，是我国基因组行业的知名企业。“金橡医学”是公司旗下临检服务的品牌，主要是基于自主研发的基因大数据分析平台，为临床提供以基因组学为核心的肿瘤精准医疗解决方案。作为业内为数不多的实体肿瘤和血液肿瘤双领先的 NGS 医疗服务公司，金橡医学已在肺癌、消化道肿瘤、泌尿系统肿瘤和血液系统肿瘤建立了独特的品牌优势，累计推出 30 余种检测产品，涉及多个癌种的早诊早筛、遗传性判定、诊断分型、靶向和免疫用药伴随诊断、预后评估和动态监控等，获得众多临床和实验室专家的肯定，服务对象已超过 500 家医院。

Headquartered in Zhongguancun National Demonstration Area for Independent Innovation, AcornBio has testing and R&D centers in Beijing and Tianjin with a total area of 5,000 square meters. Focusing on researches on applications and industrialization of the new-generation genomics in oncology precision medicine, it is a well-known enterprise in China’s genomic industr. As a brand of clinical testing services under the company, “AcornMed” focuses on providing clinical solution for oncological precision medicine with genomics at the core and based on the independently-developed gene big data analytical platform. As one of few NGS medical service companies that take a lead in solid tumor and hematologic tumor, AcornMed has created its unique brand advantages in lung cancer, gastrointestinal cancer, genitourinary cancer, and hematologic cancer, and launched over 30 types of testing products, involving early diagnosis & screening, hereditary decision, diagnostic classification, companion diagnostic with target and immune drugs, prognosis prediction and dynamic monitoring of several types of cancer. It has been recognized by a number of clinical and laboratory experts and provided over 500 hospitals with services.



东数西算 减碳降排 / Carbon and emission reduction

中国领先的数据基础设施运营商及数据综合解决方案提供商

China’s leading data infrastructure operator and data integrated solution provider

远洋数据为远洋资本全资子公司，其依托“基金 + 产业平台”模式，正加速构建面向未来的大数据基础设施网络，赋能智慧经济新发展。目前，远洋数据已完成全国布局，机房覆盖京津冀、长三角、珠三角、成渝双城经济圈，可为客户提供全生命周期的数据中心服务。

A wholly-owned subsidiary of Sino-Ocean Capital, Sino-Ocean Data relies on the “fund plus industry platform” business model and is speedily building a future-oriented big data infrastructure network that empowers the new development of the smart economy. At present, Sino-Ocean Data has achieved nationwide coverage with computer rooms located in the Beijing-Tianjin-Hebei region, the Yangtze River Delta region, the Pearl River Delta region, and the Chengdu-Chongqing economic circle and is ready to provide customers with full lifecycle data centre services.

在双碳战略背景下，远洋数据作为能耗较高的产业，已经开始从多方面着手推进企业减碳措施，从聚焦一线城市到向资源储备丰富的中西部地区扩展，响应国家“东数西算”工程号召；同时，自主研发了包括水冷、柴发控油、电力监控等智能控制系统，以蓄冷调峰、末端空调优化等技术创新，持续提升能效，降低运维成本，全力打造高效率、低能耗、少排放的数据中心基础设施。

Guided by the “dual carbon” strategic goal (i.e., peaking carbon emissions by 2030 and achieving carbon neutrality by 2060), Sino-Ocean Data has adopted multiple carbon emissions reduction measures in an industry traditionally associated with high energy consumption. On the one hand, it has responded proactively to the national strategy to channel more computing resources from the eastern areas to the less developed western regions and shifted its focus on first-tier cities to China’s central and western regions which are rich in resources. On the other hand, it has independently developed intelligent control systems such as water-cooling systems, diesel engine oil control systems, and power monitoring systems and advanced technological innovations such as coolness storage and peak adjustment, which are continuously applied to improve energy efficiency, reduce operation and maintenance costs, and create data centre infrastructures featuring high efficiency, low energy consumption, and low emission.



助力“健康中国战略”的母婴成长中心 / A Mother and Infant Growth Center in line with the Healthy China Strategy

2017 年 12 月，远洋资本投资杏林护理之家股份有限公司，一家聚焦母婴成长的企业集团。杏林护理在全国直营 12 家月子中心，每年为过万名妈妈提供月子护理服务。自 2009 年起已深度布局粤港澳大湾区，形成连锁运营服务体系，目前正在向上海、北京拓展业务，同时也已形成较为完善的母婴生态布局，包括早教中心、医美产康、儿童摄影、中医院、干细胞存储等。公司勇于承担企业社会责任，通过“普惠型”母婴成长中心，让更多的人能够以普惠的价格享受到中高端的月子服务。此外，通过主动参与公益活动，设立仕馨公益平台，为社会母婴群体搭建专家沟通渠道，为实践“健康中国”战略贡献企业力量。

In December 2017, Sino-Ocean Capital invested in the Xinglin Nursing Co., Ltd. (“Xinglin Nursing” for short), a group focused on maternal and newborn health. Xinglin Nursing operates 12 confinement centers in China, which provide confinement care for over 10,000 new moms every year. From 2009, it started to set foot in the Guangdong-Hong Kong-Macao Greater Bay Area. To date, there has formed a complete set of franchise operation systems. Now Xinglin Nursing is expanding its business to Shanghai and Beijing. In the process, it has put in place a fairly sophisticated maternal and newborn service ecosystem, which includes early learning center, medical beauty and post-birth recovery, children photography, hospital of traditional Chinese medicine, stem cell storage facility, etc. The company has the courage to shoulder CSRs as much as it can. By operating an inclusive mother and infant growth center, it makes the high-end confinement services available for more people at affordable prices. In addition, it actively participates in public welfare activities. The Shixin Public Welfare Platform was established, where users could communicate with experts about maternal and newborn health. In doing these, the company did its part to the implementation of the Healthy China strategy.



普惠金融 科技赋能 / Fintech Empowers Inclusive Growth

睿智科技是一家金融科技公司，公司专注于科技赋能，运用大数据、人工智能和云计算手段整合产业链的上中下游需求、能力及资源，力求打造一个连接亿万消费者的金融需求与千百家金融机构信贷供给的智能金融枢纽。

WISECOTECH (Beijing) Technology Co., Ltd. (“WISECOTECH” for short) is a leading financial technology (fintech) company which is focused on using technologies such as big data, artificial intelligence (AI), and cloud computing to integrate the requests, capacities, and resources available throughout the industry chain. It has the vision to create an intelligent financial hub that can connect billions of financial consumers with hundreds of financial institutions that have credit in supply.

目前，睿智科技包括大数据评分、智能导流和一站式科技赋能在内的三大业务板块共同发力。公司重视普惠金融、教育等社会责任的实现。借助大数据、云计算和人工智能等高科技手段，公司致力于帮助政府实现面向亿万消费者的金融普惠，打造一个客户、供应商、股东和员工合作共赢共同发展的良性生态圈。此外，公司深刻感受教育对个人以及全社会的重要价值，以及基础理论研究在推动科技发展和社会进步方面的重要意义，向邓子基教育基金会分三期总计捐赠 180 万元，用于基金会举办邓子基财税学术论文系列奖项评奖活动之用。邓子基教育基金会成立 12 年来开展了丰富多彩的教育资助及财经科研活动，为促进中国的教育和财经事业发展作出了显著贡献。

At present, WISECOTECH is working hard to develop three major business segments in sync, which include big data-enabled scoring, intelligent data traffic diversion, and one-stop technology empowerment. The company attaches great importance to the fulfillment of social responsibilities with respect to many fields such as inclusive finance and education. Relying on high technologies such as big data, cloud computing and AI, it is committed to helping the government forge an inclusive finance sector targeted billions of consumers and create a virtuous ecosystem where customers, suppliers, shareholders, and employees can cooperate and grow together. In addition, WISECOTECH deeply recognizes the importance of education for both individuals and entire society, as well as the significant role of basic theoretical research in promoting technological development and social progress. On this basis, it made a donation of RMB1.8 million in three phases to the Dengzijie Education Foundation with a view to financing its financial and taxation-themed academic papers selection activities. In the past 12 years since its establishment, the Dengzijie Education Foundation carried out a variety of educational aid and financial research activities, thus making significant contributions to China’s educational and financial undertakings.

“一带一路” 境外责任投资
Overseas Responsible Investments under the Belt and Road Initiative

远洋资本着眼于亚太、北美、欧洲等地的“一带一路”重点城市及地区。以持有型物业投资为主业，探索进行负责任的海外 PE 股权投资。目前计划中包括亚太学生公寓基金、全球养老物业基金、亚太不动产夹层基金。其中亚太学生公寓基金是远洋资本为服务海外留学生住房需求而搭建的核心增益型美元基金，为海外留学生提供良好居住环境。全球养老物业基金充分利用远洋集团和国际领先的养老服务商的合资平台所赋予的管理能力，把握全球老龄化趋势，推动养老产业健康发展。

Sino-Ocean Capital focuses our attention on the key cities and regions of Asia Pacific, North America, Europe and other places along the Belt and Road. With property investment as the principal business, we actively explore to socially responsible PE investments in offshore markets. So far, the projects under planning include the Asia-Pacific Student Housing Fund, the Global Senior Housing Fund, and the Asia-Pacific Real Estate Mezzanine Fund. Of these, the Asia-Pacific Student Housing Fund is a core-plus USD fund formed by Sino-Ocean Capital to meet the housing needs of students studying abroad, by providing them with a good living environment. Relying on the management capabilities endowed by a joint venture platform Sino-Ocean Group has established with the world's leading pension service providers, the Global Senior Housing Fund closely follows the global trend of population aging, to promote the healthy development of the senior care industry.

海外投资 / Overseas Investment

着眼于亚太、北美、澳大利亚、欧洲等地的重点城市及地区。以持有型物业投资为主业，探索进行海外 PE 股权投资。

Sino-Ocean Capital actively monitors the market developments in the key cities and regions in Asia Pacific, North America, Australia, Europe, and other places. With investment properties as the principal business, we explore how to make overseas PE investments.

亚太学生公寓基金 / Asia-Pacific Student Housing Fund

亚太学生公寓基金是远洋资本为服务海外留学生住房需求而搭建的核心增益型美元基金。本基金以泛亚太发达经济体为投资区域，有效涵盖了传统及新兴的热门留学市场。基金定位为核心增益型，以投资学生公寓为主，其他高收益的新型居住业态为辅。

Asia-Pacific Student Housing Fund is a core-plus USD fund formed by Sino-Ocean Capital to meet the housing needs of students studying abroad. Targeted at the developed economies across the Asia-Pacific region, this core-plus fund covers traditional and emerging hot denitions of overseas students. As a core-plus fund, it mainly invests in student housing projects, with other new forms of high-yield residential properties as a supplement.

全球养老物业基金 / Global Senior Housing Fund

全球养老物业基金致力于把握全球老龄化趋势所带来的投资机会，目标收购位于黄金地点的核心及增值型养老物业。通过充分利用远洋集团和国际领先的养老服务商的合资平台所赋予的管理能力，基金在锁定优质资产以及提升资产价值方面享有独特优势。

Global Senior Housing Fund is dedicated to capture the investment opportunities presented by the global trend of population aging. The fund focuses on the core and value-added senior housing assets in prime locations. Utilizing the management capability bestowed by a joint-venture platform Sino-Ocean Group has created with the world's leading senior service providers, the Fund is uniquely positioned to secure premium assets and enhance portfolio value.

亚太不动产夹层基金 / Asia-Pacific Real Estate Mezzanine Fund

亚太不动产夹层基金致力于为优质的不动产项目提供多样的融资解决方案。基金采用机遇型投资策略，通过夹层债和优先股的方式，投资位于亚太地区的不动产项目。

Asia-Pacific Real Estate Mezzanine Fund aims to provide a diversity of financing solutions for premium real estate projects. Leveraging an opportunistic investment strategy, the fund invests in real estate projects located in Asia Pacific through such forms as mezzanine debt and preferred equity.



中西部责任投资
Responsible Investment in the Central and Western Regions of China



途远公司成立于 2016 年，以特色装配式建筑为载体，秉承“智造美好生活、振兴美丽乡村”的理念，为地方政府提供乡村振兴整体解决方案。
Founded in 2016, Tuyuan focuses on featured prefabricated buildings, follows the vision for “create a better life and revitalize beautiful rural areas” and provides local governments with integrated solution to rural vitalization.

基于“两途一趣”模式，途远整合“黑科技智建+互联网智营+乡村振兴智库”全产业链，结合旗下的会员制民宿预订平台“趣悠悠”与旅游特产分享电商平台“途礼”提供负责项目运营、民宿预订、特产售卖等运营服务，为政府解决乡村旅游产业面临的“品牌和流量”两大痛点问题，提供从规划、建造、运营到增值服务全生命周期服务。

Based on a new model, Tuyuan integrates the full industrial chain involving “construction based on black technology + Internet-based operation + think tanks for rural vitalization”, offers services of project operation, homestay reservation, and specialty selling in cooperation with “Quyoyou, a membership platform for homestay reservation, and “Tuli”, an e-commerce platform for sharing tourism products, solves two “pain spot” problems of “brand and flow” of the rural tourism industry faced by the government, and provides services in the entire lifecycle ranging from planning, construction, operation, and value-added services.

目前途远业务遍及国内 4 个直辖市，18 个省 50 个县市，1 个特别行政区及 4 个海外城市，并和 200 个地方政府建立了合作关系，为美丽乡村建设贡献价值。

At present, Tuyuan operates in four municipalities, 50 counties and cities in 18 provinces, one special administrative regions and four foreign cities, and cooperates with 200 local governments to contribute to building a beautiful countryside.

2017 年，途远与中华儿慈会联合发起公益项目“中国万村童阅计划”

In 2017, Tuyuan and China Charities Aid Foundation for Children jointly launched a public-welfare program entitled “China Village Children Reading Program”

2020 年，途远战略升级为乡村振兴整体解决方案供应商，中央党校精准扶贫实验室科研基地（四川）落户新津途远集趣·共享农庄。

In 2020, Tuyuan was strategically upgraded into an integrated solution provider for vitalization of rural areas, and the Sichuan Scientific Research Base of the Party School of the CPC Central Committee for Targeted Poverty Alleviation was settled in Xinjin.



意见反馈表 / Feedback

尊敬的读者：

您好！

感谢您阅读《远洋资本 ESG 负责任投资简报》，为进一步改进我们的工作，向您及其他合作伙伴提供更有价值的信息，使我们不断提升履行社会责任的能力和水平，请您为我们的简报提出宝贵的意见和建议：

Dear readers,

Thank you for reading the *Sino-Ocean Capital ESG investment Briefing*. To further improve our work, provide you and other partners with more useful information, and deliver a better performance in our CSR fulfillment. We'd like to invite you to participate the following questionnaire. Your feedbacks will be greatly appreciated.

1. 您属于哪类读者？

- ☐政府 ☐监管机构 ☐股东或投资者 ☐客户 ☐员工
- ☐供应商与合作伙伴 ☐公众 ☐媒体 ☐其他

1. Which group of readers do you belong to?

- ☐ Government ☐ Regulator ☐ Shareholder or investor ☐ Customer ☐ Employee
- ☐ Supplier and partner ☐ The public ☐ Media ☐ Others

2. 您对本简报的整体评价如何？

- ☐很好 ☐较好 ☐一般 ☐较差 ☐很差

2. What is your overall evaluation of this briefing?

- ☐ Very good ☐ Good ☐ Intermediate ☐ Poor ☐ Very poor

3. 简报是否全面、准确地反映了远洋资本在环境、社会、公司治理方面的表现？

- ☐很好 ☐较好 ☐一般 ☐较差 ☐很差

3. What is your evaluation of the briefing in offering a comprehensive, accurate account of Sino-Ocean Capital's ESG performance?

- ☐ Very good ☐ Good ☐ Intermediate ☐ Poor ☐ Very poor

4. 简报是否对利益相关方所关心的问题进行全面回应和披露？

- ☐很好 ☐较好 ☐一般 ☐较差 ☐很差

4. What is your evaluation of the briefing in providing a comprehensive response to and disclosure of the matters about which stakeholders are concerned?

- ☐ Very good ☐ Good ☐ Intermediate ☐ Poor ☐ Very poor

5. 您认为本简报的版式设计是否有助于您对相关信息的理解？

- ☐很好 ☐较好 ☐一般 ☐较差 ☐很差

5. To what extent do you think the layout of this briefing can facilitate your understanding?

- ☐ Very good ☐ Good ☐ Intermediate ☐ Poor ☐ Very poor

6. 您认为本简报最让您满意的方面是什么？

6. What do you think is the most satisfying aspect of this briefing?

7. 您对我们今后发布 ESG 负责任投资简报有何建议？

7. Do you have any suggestions about our future ESG investment briefings?

再次衷心感谢您的支持，您可以通过以下方式反馈给我们：

Thank you again for your support. You can give us feedback in the following ways:

远洋资本有限公司 / Sino-Ocean Capital
地址：北京市朝阳区东四环中路 56 号远洋国际中心 A 座 3 层
Add : 3F, Tower A, Sino-Ocean International Center, 56 East 4th Ring Middle Road, Chaoyang District, Beijing
电话 / Tel: +86(10)65107979
传真 / Fax: +86(10)65107931
媒体关系 / Media relations: capitalmedia@sinooceangroup.com
投资者关系 / Investor relations: IRMS@sinooceancapital.com